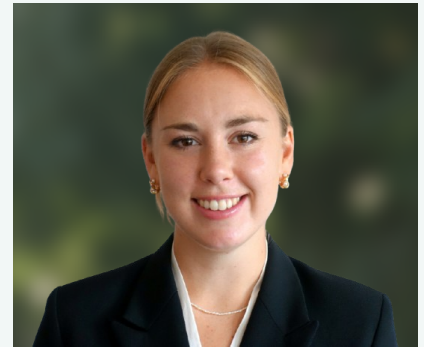


Annie Davis

CALL: 2022

Email Clerk:

Telephone Clerk:



Overview

Annie commenced pupillage in October 2024.

Prior to pupillage, Annie worked as a Judicial Assistant to Lady Simler in the Court of Appeal where she assisted on a variety of cases, writing bench memoranda and assessing permission to appeal applications.

Annie also worked in HR for Pret A Manger, working on both a company integration and retail restructure as a result of the COVID-19 pandemic.

Academics

Bar Practice Course, The University of Law (Outstanding)

GDL, The University of Law (Distinction)

BA, History, The University of Exeter (First)

Awards

The Birkenhead Scholarship, Gray's Inn

Law First Scholarship, The University of Law

Expertise

Recommendations

"Old Square are my preferred set of chambers and have been throughout my career. They will always try to accommodate needs and the set are very down to earth and approachable. We have developed very good working relationships with the team over the years." The Legal 500

Key contacts
